

RECOMBINANT HUMAN MELATONIN RECEPTOR TYPE 1A
2018
Protein information

Target Name	Melatonin receptor type 1A (MT ₁)
Catalogue Number	PP2
Class	GPCR Class A
Sequence	Full-length, wildtype sequence, with a N-terminus twin Strep tag II , 10xHis-tag , and TEV protease cleavage site : MASAW SH P Q FEKGGGSGGGSGGSA W SH P Q F EKGA H H H H H H H H H ENLY F Q Q QNGSALPNAS QPVL R GDGARPSWLASALACVL I F T I V VD I LGNLLV I LSV Y R N KKLR N AG N IF V SL A V A DL V V A I Y P Y PL V MS I F N NG W N L GY L HC Q V S G F LM G LS V IG S IF N IT G I A IN R Y C Y I CH S L K Y D K L Y S S K N S L C Y V LL I W LL T LA A VL P N L R A GT L Q Y D P RI Y S C T F A Q S V SS A Y T I A V V V F H F L V PM I I V IF C Y L R I W I L V L Q V R Q R V K P D R K P K L K P Q D F R N F V T M F V V F V L F A I C W A PL N F I GL A V A S D P A S M V P R I E W L F V A S Y Y M A Y F N S CL N A I Y G LL N Q N F R KEY R RI V SL C T A R V F F V D SS N D V A D R V K W K P S L M T N N N V V K V D S V
Affinity Tag	StrepX2/His (both N-terminal)
Origin	Human (Homo sapiens)
Theor. MW	44,8 kDa
Accession #	P48039 (UniProt)

Protein production

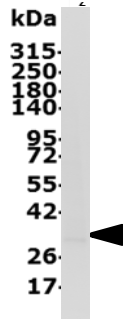
Expression system	Sf9 insect cells (baculovirus)
Purification	Solubilized using CALIXAR patented technology and purified using Metal Affinity Chromatography in presence of Sarkosyl/CHS
Purity	>90%
Activity	Confirmed by radiobinding assay and activation of Gi
Concentration	Up to 5mg/ml
Sample Buffer	25mM Na ₂ HPO ₄ pH 8.0, 150mM NaCl, 0.86%/0.18% Sarkosyl/CHS
Available quantity	From 10µg up to mg scale
References	<ol style="list-style-type: none"> 1- Daulat AM. Et al. Purification and identification of G protein-coupled receptor protein complexes under native conditions. <i>Mol Cell Proteomics</i>. 2007 May;6(5):835-44. Epub 2007 Jan 9. 2- Igonet et al. <i>In preparation</i>.

Miscellaneous

Shipment Temperature	Dry ice
Storage conditions	Store at -80°C

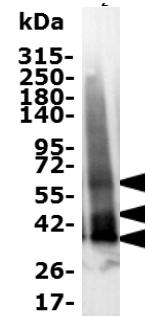


Quality Controls (Purity and Activity):



SDS-PAGE.

IMAC elution fraction of MT₁ was migrated on a 4-15% Tris-glycine SDS-PAGE and the total proteins were Stain-Free detected. The black arrow indicates full-length MT₁.



Western blotting

IMAC elution fraction of MT₁ was migrated on a 4-15% Tris-glycine SDS-PAGE, transferred to pvdf membrane and immunodetected with a rabbit polyclonal anti- MT₁ (Fox 25.7, from Ralf Jockers laboratory). Black arrows indicate the target.

Other data on purified MT₁ will be available soon.

Restricted use: Limited Use Label License

The purchase of this product conveys to the purchaser the limited, non-transferable right to use the purchased amount of the product and progeny, to perform internal research and development for the sole benefit of the purchaser.

Safety: Not known as a hazardous substance or mixture. General industrial hygiene practices must be followed as the use of adapted personal protective equipment for skin and body.

Technical support

For additional product and technical information email our Technical Support team at contact@calixar.com.

Limited product warranty

To the extent allowed by law, calixar will not be liable for special, incidental, indirect, punitive, multiple or consequential damages in connection with or arising from this document, including your use of it.

© 2017 Calixar. All rights reserved. All trademarks are the property of Calixar and its subsidiaries.