

**RECOMBINANT HUMAN MELATONIN RECEPTOR TYPE 1A**

**2019**

**Protein information**

<b>Target Name</b>	Melatonin receptor type 1A (MT <sub>1</sub> )
<b>Catalogue Number</b>	PP2
<b>Class</b>	GPCR Class A
<b>Sequence</b>	Full-length, wildtype sequence, with a N-terminus twin <b>Strep tag II</b> , <b>10xHis-tag</b> , and <b>TEV protease cleavage site</b> :  MASAW <b>SH</b> P <b>Q</b> FEKGGGSGGGSGGSA <b>W</b> SH <b>P</b> Q <b>F</b> EKGA <b>HHHHHHHHHH</b> ENLY <b>F</b> Q <b>Q</b> NGSALPNAS QPVL <b>R</b> GDGARPSWLASALACVL <b>I</b> FTIVVDILGNLLVILSVYRNKKLRNAGNIFVVSLAVADLVVAI <b>P</b> Y PLV <b>L</b> MSIFNNGWNLGYLHCQVSGFLMGLSVIGSIFNITGIAINRYCYICHSLKYDKLYSSKNSLCYVLL IWLLT <b>L</b> AAVLPNLRAGTLQYDPRIYSCTFAQSVSSAYTIAVVVFHFLVPMIIVIFCYLRIWILVLQVRQR VKPDRKPKLKPQDFRN <b>F</b> VTMFVV <b>F</b> VLFAICWAPLNF <b>I</b> GLAVASDPASMV <b>P</b> RIPEWLFVASY <b>M</b> AYFNS CLNAI <b>I</b> YGLLNQ <b>N</b> FRKEYRRIIVSLCTARV <b>F</b> VDSSNDVADRVKWKPSPLMTNNNVVKVDSV
<b>Affinity Tag</b>	StrepX2/His (both N-terminal)
<b>Origin</b>	Human (Homo sapiens)
<b>Theor. MW</b>	44,8 kDa
<b>Accession #</b>	P48039 (UniProt)

**Protein production**

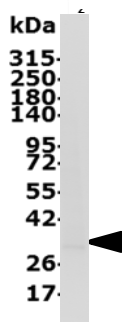
<b>Expression system</b>	Sf9 insect cells (baculovirus)
<b>Purification</b>	Solubilized using CALIXAR patented technology and purified using Metal Affinity Chromatography in presence of Sarkosyl/CHS
<b>Purity</b>	>90%
<b>Activity</b>	Confirmed by radiobinding assay and activation of Gi
<b>Concentration</b>	Up to 5mg/ml
<b>Sample Buffer</b>	25mM Na <sub>2</sub> HPO <sub>4</sub> pH 8.0, 150mM NaCl, 0.86%/0.18% Sarkosyl/CHS
<b>Available quantity</b>	From 10µg up to mg scale
<b>References</b>	1- Daulat AM. Et al. Purification and identification of G protein-coupled receptor protein complexes under native conditions. <i>Mol Cell Proteomics</i> . 2007 May;6(5):835-44. Epub 2007 Jan 9. 2- Igonet et al. <i>In preparation</i> .

**Miscellaneous**

<b>Shipment Temperature</b>	Dry ice
<b>Storage conditions</b>	Store at -80°C

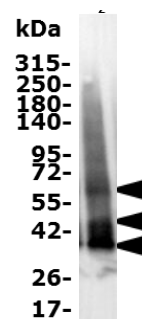


## Quality Controls (Purity and Activity):



**SDS-PAGE.**

IMAC elution fraction of MT<sub>1</sub> was migrated on a 4-15% Tris-glycine SDS-PAGE and the total proteins were Stain-Free detected. The black arrow indicates full-length MT<sub>1</sub>.



**Western blotting**

IMAC elution fraction of MT<sub>1</sub> was migrated on a 4-15% Tris-glycine SDS-PAGE, transferred to pvdf membrane and immunodetected with a rabbit polyclonal anti- MT<sub>1</sub> (Fox 25.7, from Ralf Jockers laboratory). Black arrows indicate the target.

**Other data on purified MT<sub>1</sub> will be available soon.**

**Restricted use:** All CALIXAR products or derived products shall be used for internal research only excluding any direct or indirect commercial uses. (Under patents rights – For other uses, please contact us at [contact@calixar.com](mailto:contact@calixar.com)).

**Limited Use Label License:** The purchase of this product conveys to the purchaser the limited, non-transferable right to use the purchased amount of the product and progeny, to perform internal research and development for the sole benefit of the purchaser.

**Safety:** Not known as a hazardous substance or mixture. General industrial hygiene practices must be followed as the use of adapted personal protective equipment for skin and body.

### Technical support

For additional product and technical information email our Technical Support team at [contact@calixar.com](mailto:contact@calixar.com).

### Limited product warranty

TO THE EXTENT ALLOWED BY LAW, CALIXAR WILL NOT BE LIABLE FOR SPECIAL, INCIDENTAL, INDIRECT, PUNITIVE, MULTIPLE OR CONSEQUENTIAL DAMAGES IN CONNECTION WITH OR ARISING FROM THIS DOCUMENT, INCLUDING YOUR USE OF IT.

