

RECOMBINANT HUMAN MELATONIN RECEPTOR TYPE 1A

2017

Protein information

| | |
|-------------------------|--|
| Target Name | Melatonin receptor type 1A (MT ₁) |
| Catalogue Number | PP2 |
| Class | GPCR Class A |
| Sequence | Full-length, wildtype sequence, with a N-terminus twin Strep tag II , 10xHis-tag , and TEV protease cleavage site : MASAW SH P Q FEKGGGSGGGSGGSA W SH P Q F EK G A H H H H H H H H H ENLY F Q G QNGSALPNAS QPVL R GDGARPSWLASALACVL I FT I V D ILGNLLVILSVYRNK K LRNAGN I F V SLAVADLV V AI P Y PLV L MS I F N NGWNLG L Y L HCQ V SG F LM G LS V IG S IF N IT G I A IN R Y C Y I CH S L K Y D K L Y S S K N S L C Y V LL I W LL T LA A VL P N L R A GT L Q Y D P RI Y S C T F A Q S V S S A Y T I A V V V F H F L V P M I I V I F C Y L R I W I L V L Q V R Q R V K P D R K P K L K P Q D F R N F V T M F V V F V L F A I C W A P L N F I G L A V A S D P A S M V P R I E W L F V A S Y M A Y F N S C L N A I I Y G L L N Q N F R K E Y R R I V S L C T A R V F F V D S S N D V A D R V K W K P S L M T N N N V V K V D S V |
| Affinity Tag | Strep2/His (both N-terminal) |
| Origin | Human (Homo sapiens) |
| Theor. MW | 44,8 kDa |
| Accession # | P48039 (UniProt) |

Protein production

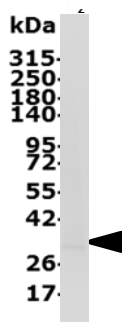
| | |
|---------------------------|---|
| Expression system | Sf9 insect cells (baculovirus) |
| Purification | Immobilized Metal Affinity Chromatography |
| Purity | >90% |
| Activity | Confirmed by radiobinding assay and activation of Gi. |
| Concentration | Up to 5mg/ml |
| Sample Buffer | 25mM Na ₂ HPO ₄ pH 8.0, 150mM NaCl, 0.86%/0.18% Sarkosyl/CHS |
| Available quantity | From 10µg up to mg scale |
| References | 1- Daulat AM. Et al. Purification and identification of G protein-coupled receptor protein complexes under native conditions. <i>Mol Cell Proteomics</i> . 2007 May;6(5):835-44. Epub 2007 Jan 9. 2- Igonet et al. <i>In preparation</i> . |

Miscellaneous

| | |
|-----------------------------|----------------|
| Shipment Temperature | Dry ice |
| Storage conditions | Store at -80°C |

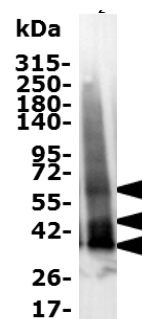


Quality Controls (Purity and Activity):



SDS-PAGE.

IMAC elution fraction of MT₁ was migrated on a 4-15% Tris-glycine SDS-PAGE and the total proteins were Stain-Free detected. The black arrow indicates full-length MT₁.



Western blotting

IMAC elution fraction of MT₁ was migrated on a 4-15% Tris-glycine SDS-PAGE, transferred to pvdf membrane and immunodetected with a rabbit polyclonal anti- MT₁ (Fox 25.7, from Ralf Jockers laboratory). Black arrows indicate the target.

Other data on purified MT₁ will be available in October 2017.

Restricted use: Limited Use Label License

The purchase of this product conveys to the purchaser the limited, non-transferable right to use the purchased amount of the product and progeny, to perform internal research and development for the sole benefit of the purchaser.

Safety: Not known as a hazardous substance or mixture. General industrial hygiene practices must be followed as the use of adapted personal protective equipment for skin and body.

Technical support

For additional product and technical information email our Technical Support team at contact@calixar.com.

Limited product warranty

To the extent allowed by law, calixar will not be liable for special, incidental, indirect, punitive, multiple or consequential damages in connection with or arising from this document, including your use of it.

© 2017 Calixar. All rights reserved. All trademarks are the property of Calixar and its subsidiaries.